



Primarily applied by roller over multiple surfaces, SpreadStone Textured Stone Coating easily allows both do-it-yourselfers and experienced tradespeople to add authentic-looking stone, ceramic and other attractive effects to almost any existing surface – indoors and out.

SpreadStone is specifically formulated to eliminate the usual performance flaws present with typical indoor/outdoor surfaces like concrete, ceramic tile, carpet, vinyl, linoleum, wood and even stone. It is also used to resurface existing formica countertop surfaces.

SpreadStone forms a tough yet flexible stone shell that protects surfaces from water intrusion, human and vehicular traffic, salt, freeze/thaw cycles, UV rays, impact, abrasion, stains, mold and mildew.



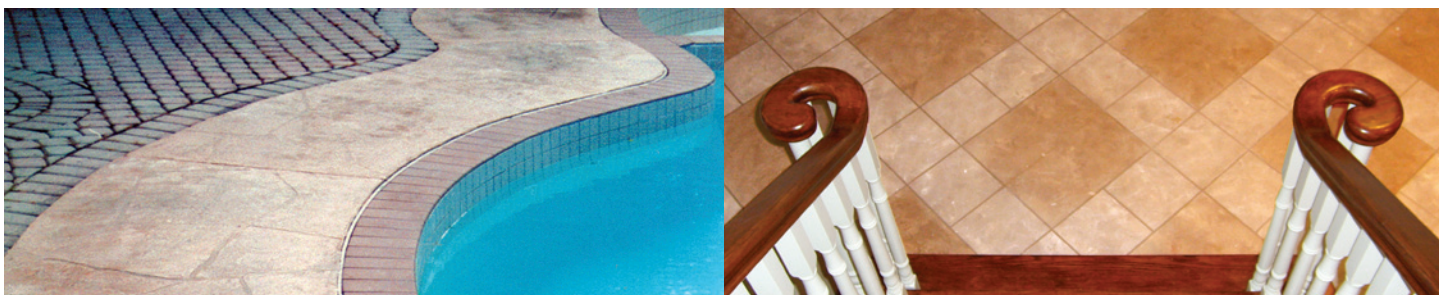
SpreadStone is also breathable, allowing water vapor to slowly escape from beneath the finish surface and evaporate while preventing water intrusion from rain, sprinklers, dew or other sources. This “semi-permeable” feature prevents build-up of condensed water behind the coating and consequent bubbling, blistering and peeling.

PERFORMANCE FEATURES

- resistant to freeze/thaw conditions
- flexible
- breathable
- low shrinkage
- colorfast
- ultra-violet brittle resistant
- bacteria resistant
- pre-mixed
- salt /salt spray resistant
- easy maintenance
- crack resistant
- alkali resistant
- abrasion and impact resistant
- non-cementitious
- store-tintable to numerous colors

PRIMARY BENEFITS

- **100% ROLLER APPLICATION produces authentic stone and ceramic results.**
- Can also be applied by brush, trowel and texture spray equipment.
- SpreadStone comes completely pre-mixed and ready to apply – No blending or measuring.
- Comes as a tintable white base which can be colored just like paint
- Color is dispersed throughout the material. Even unlikely chipping will not be readily apparent
- Less than 50 g/l VOC. The product is water-based, user friendly and environmentally safe.
- Resists the growth of mold, mildew, algae and other bacteria through low water absorption rate and our CAS & EPA registered fungicide. (* 26530-20-1 / **707-100)



DESCRIPTION

High performance pre-mixed polymer/stone matrix coating for use over numerous existing surfaces. Creates a very hard, water, weather and traffic resistant surface with a decorative appearance similar to authentic natural stone or ceramic tile.

USES

Used over stationary exterior/interior concrete, masonry floors and decks, linoleum, stationary wood and formica.

PACKAGING

SpreadStone is available in one quart (900 ml), one gallon (3.6 L) and five US gallon (18.9 litre) containers.

COVERAGE (per gallon)

Thin skim-coats: up to 130 sq.ft. Light texture coats: 70 to 100 sq.ft. Heavier texture coats: 45 to 70 sq.ft. Coverage will vary with roughness of surface and application thickness.



SURFACE PREPARATION

Surface must be clean and dry, stable and free from spalling, efflorescence, dust, dirt, oils, surface flaking, poorly bonded or glossy paint, sealers, salts and other contaminants which may effect adhesion and product performance. New concrete must be allowed a minimum of 30 days cure time prior to application of RollerRock™. New masonry surfaces should be allowed to cure a minimum of 48 hours prior to application. Exterior surfaces should be power washed using at least 1500 psi to clear any surface contaminants. For application over concrete/masonry surfaces which have been recently installed, or are smooth or efflorescent the surface needs to be cleaned and etched with **DAICH All-In-One Concrete Cleaner/Etcher**. Etching can also be accomplished with a blended solution of water and muriatic acid (2 parts water/1 part muriatic acid), follow by gently rinsing away all etcher and then perform pressure washing for effective removal of all etching/acid residues. For interior concrete surfaces we recommend scrubbing with **DAICH All-In-One Concrete Cleaner/Etcher** or TSP. For applications over non-porous interior surfaces (vinyl, linoleum, ceramic tile) we recommended performing surface abrasion prior to washing to create surface profile for improved adhesion. ***See detailed instructions with product packaging.**

MIXING

Thoroughly stir contents prior to application.

APPLICATION

Product is a simple three-step application: 1) Roll on Daich Textured Primer 2) Roll on SpreadStone 3) Roll on Daich Sealer.

Specifically, SpreadStone is applied using the "Daich Faux Texture Roller." May also be applied by brush, trowel or spray equipment. See product instructions or instruction videos for additional information. Ambient temperatures must not be less than 50° F (10°C), and should not exceed 90° degrees F (32°C) during application and for a continuous period of at least 24 hours after application. Do not work in direct sunlight in very warm weather. Clean tools with soap and water prior to cure of material. See instructions for trowel application techniques if desired.

CURE TIME

Dry to touch in 60 minutes, load bearing in 3 to 6 hours depending on atmospheric conditions. Protect coated surfaces for 6-8 hours prior to exposure to rain or heavy condensation. Cure time should be doubled in cool or damp conditions before sealing is attempted to avoid moisture entrapment.

STORAGE

Product may be stored in its unopened container for up to two years.

SEALING:

Once fully cured for at least 24 hours, SpreadStone finishes should be sealed with **DAICH Acrylic Sealer** or, for interior or high traffic areas susceptible to excessive dirt and grime, **DAICH High-Build Ultra**. Sealer assists in SpreadStone's overall water-resistance, cleanliness and

long-term durability. Apply sealer as directed. Perform recoats every one to two years as required. For heavier duty clear coats for high traffic commercial use on interior floors, **DAIHARD Epoxy Clear Coat** is recommended. Additional products from the DAICH selection of Industrial "DAIHARD" Epoxy and Urethane Systems can also be used. For more information, consult the DAICH web site at www.daichcoatings.com for product details.

MAINTENANCE

Most stains from food or beverages can be easily cleaned using water and a sponge. For more persistent stains, we recommend **X-Mess Multi-Purpose Cleaner** by DAICH for easy safe cleaning of Daich Textured finishes and most other surfaces. A natural citrus cleaner and bristle brush may be used followed by rinsing with water.

PRECAUTIONS

In case of contact with eyes, flood eyes repeatedly with potable water and call a physician. DO NOT RUB EYES due to coarseness of granules. Wash hands thoroughly after handling. Do not take internally. KEEP OUT OF REACH OF CHILDREN. Keep container closed. Do not use in the presence of unprotected foodstuffs. Keep product from freezing. Product which has been frozen must be discarded. Dispose of unused material in accordance with local, state and federal guidelines.



MATERIAL PROPERTIES

COLORS: Customized
VEHICLE TYPE: Acrylic
SOLIDS BY VOLUME: N/A
WEIGHT: 12 lbs. per gallon
VOLATILE ORGANIC COMPOSITION: Less than 50 grams per liter / Non-toxic
FLASH POINT: Non-Combustible
SURFACE BURNING CHARACTERISTICS: ASTM E84-CAN/ULC-5101M
FLAME SPREAD: 0
DRY TIME @ 75F: 15 minutes to touch (4 to six hours prior to rain)
THINNER: Not recommended
ABRASION RESISTANCE: No cracking or loss of film – integrity (ASTM D-968)
ABSORPTION: 2.2 (ASTM C-67-81)
ACCELERATED WEATHERING: 4,000 hours without blistering or cracking (ASTM G-23)
ACID RESISTANCE: Sulfuric, nitric, hydra – 6 hours acid, 2 hour dry – no blistering, cracking, wrinkling or lifting (CGSG 1-GP-71)
ADHESION: Passed ASTM D4541
FREEZE/THAW: No change after 50 cycles. ASTM C-67
HEMISPHERICAL SPECTRAL REFLECTION: Over cement board 74.3% (ASTM E903-82)
TOTAL EMITTANCE: Over cement 0.89 (ASTM E408-71)
MILDEW RESISTANCE: No growth after 45 days MIL. STD. 810C
SALT SPRAY: 2,000 hours – No deleterious effect. ASTM B117
WATER VAPOR TRANSMISSION: 2.3 perms (finish) / 2.6 perms (primer)

MATERIAL TESTING PROGRAM

The following tests have been successfully performed and met or exceeded the following criteria.

ASTM G 23–81 Accelerated Weathering Test
ASTM E–84 Burning Test – Surface/Tunnel Test
ASTM B–117 Salt Spray Fog Test
ASTM E–96 Vapor Transmission Test
ASTM D–1037 and EIMA 101.86 Impact Resistance Test
ASTM D–968/81 Abrasion Resistance Test
ASTM 1640–83 Dry Time
ASTM E–96–80 Permeability